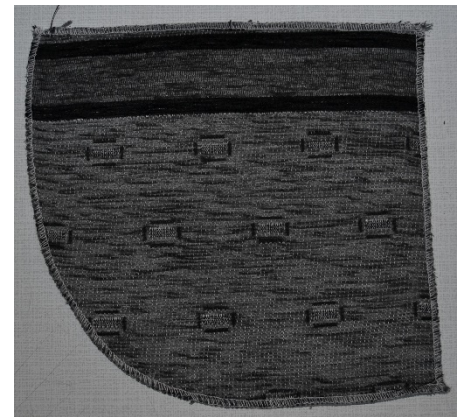
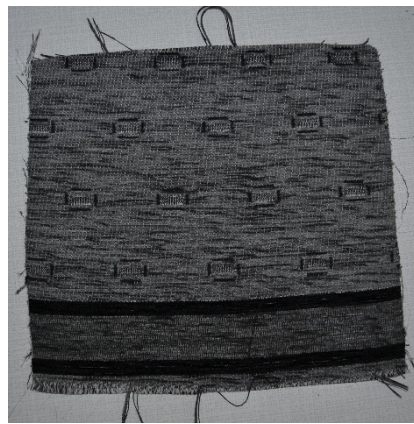


### 3.2. Sewing On Overlock Machine

Overlock machines take their name from the sewing type, which means closing in English or called finishing stitch. Overlock machines are generally divided into two groups as industrial and domestic use.

The types of sewing and thread amounts used in overlock machines are as follows;

- 3 Threaded overlock machine
- 4 Threaded overlock machine
- 5 Threaded overlock machine



**Figure 3.2.1 Before overlock operation**

**Picture**

**3.2.2. After overlock process**

Overlock stitching features;

- Sewing is easy and fast.
- Sewing can be removed.
- It is a type of thick stitch when used in the joints.
- Yarn consumption is 400-600% higher than straight sewing.
- The seam can be detachable at the beginning and end of the sewing joints.